

Topic: Elvington and The Chocolate Story!



Bookshelf

Science

Animals including humans

Looking at what makes a healthy diet.
Discovering the life cycle of a range of animals.



Geography:

Looking at the World's Seven Continents and Five Oceans. Using maps and globes to locate



PSHE

*Discussing different feelings and how to manage them.
*Looking at and valuing differences between each other.



Art & Design Technology:

Painting and mixing colours.
Designing a new chocolate bar wrapper.
Sewing a special surprise.



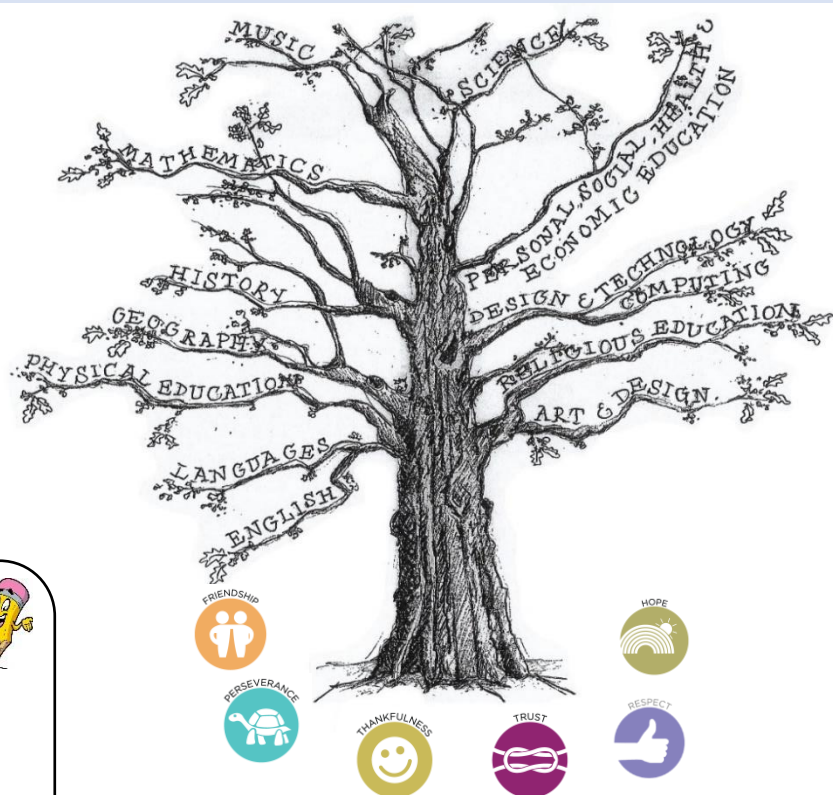
Religious Education

What is Judaism and what do they believe?



English

Recount- Writing about our Super Start Chocolate Adventure Day.
Instructions- explaining how to make chocolate slime.
Story- linking to a traditional tale from the book shelf.



Music

Songs, rapping and activities linking to pop and soul music.



Computing

E-Safety



*How can we keep safe online?
Activities linking to E-Safety Week.

Maths

*Place Value
*Multiplication and Division
*Measurement
*Time
*Geometry of shape



P.E

Gymnastics- Rolls, spinning, twisting and much more.
Games- Ball skills (dribbling, kicking, hitting).

